

POS Printer Driver

1. Operating environment

The software supports the following x86-based operating systems

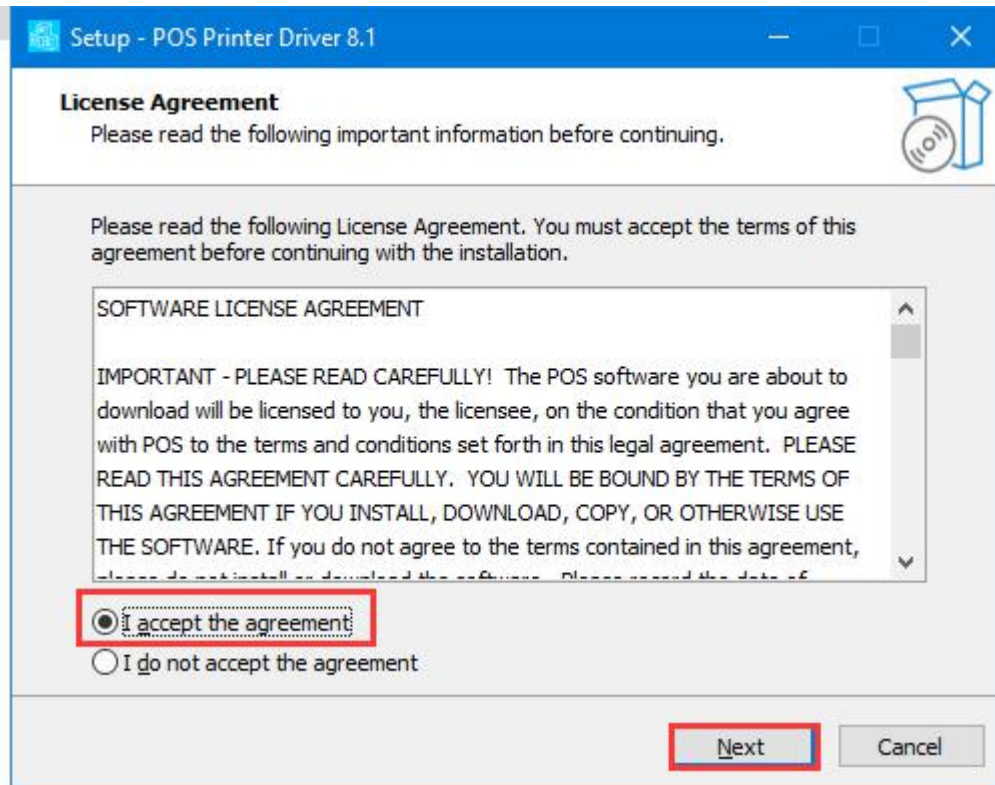
- Windows 11
- Windows 10
- Windows 8
- Windows 7
- Windows 2003
- Windows Vista
- Windows XP

2. Drive installation

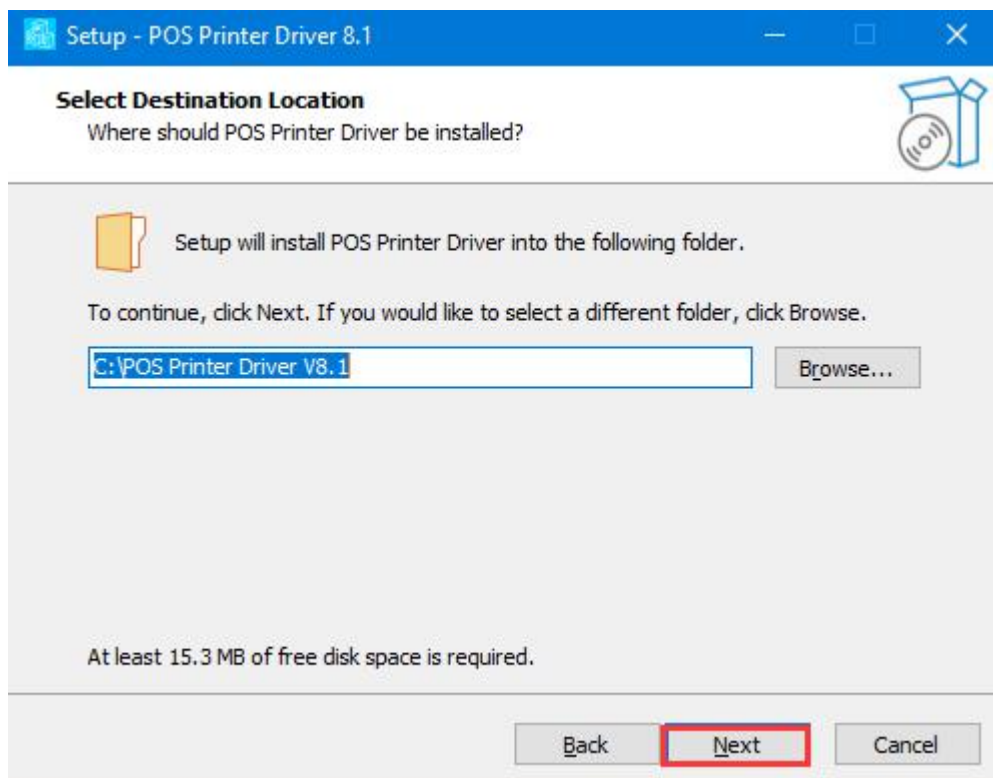
2.1. Double-click the .exe file to begin the installation



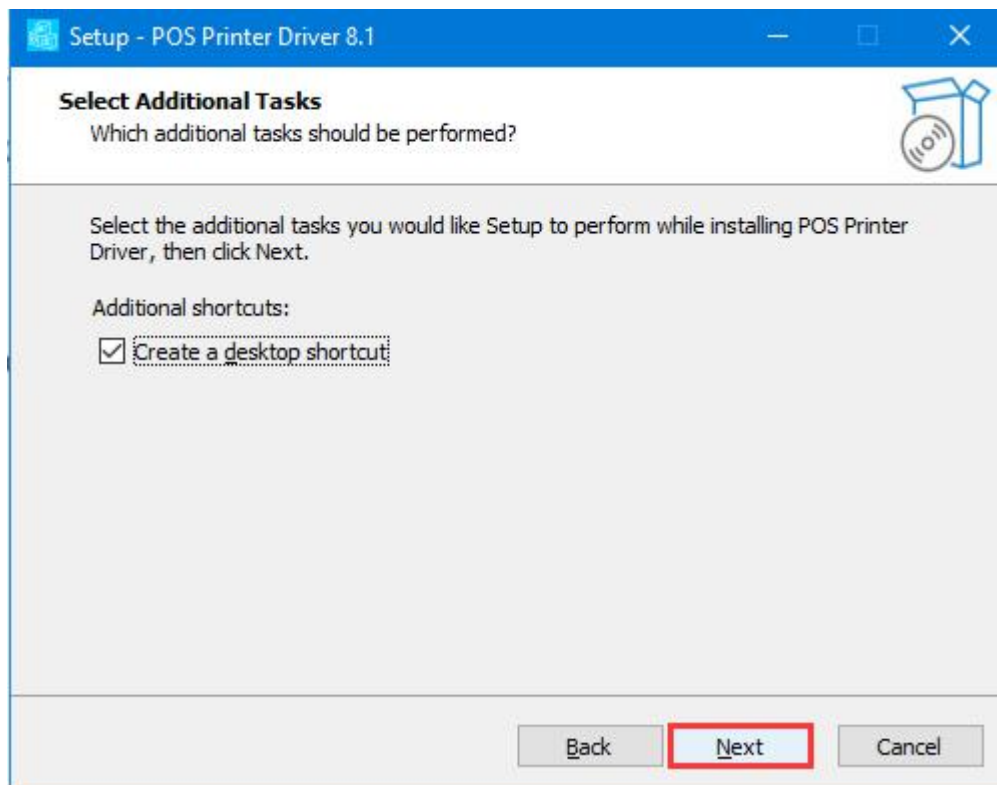
2.2. Please read the software license agreement carefully and select "I accept the agreement" after confirming. Click "Next".



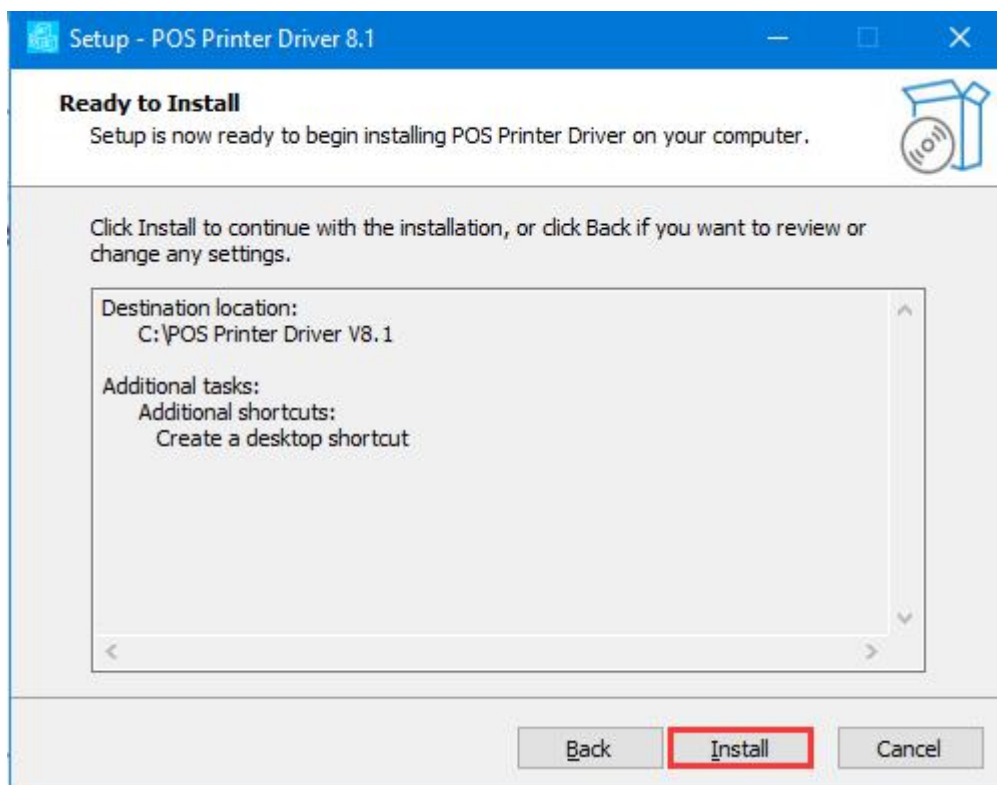
2.3. Select your installation path and click the "Next" button



2.3. Click Next



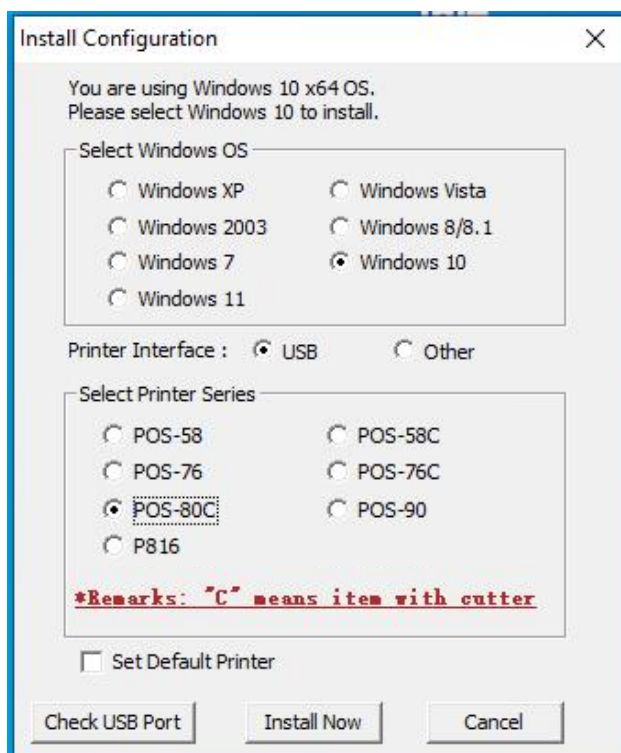
2.4 Click Install



2.5 After the installation is complete, click the "Finish" button to go to the driver installation interface.



2.6 Select the model to install the driver



2.6.1. Select your operating system

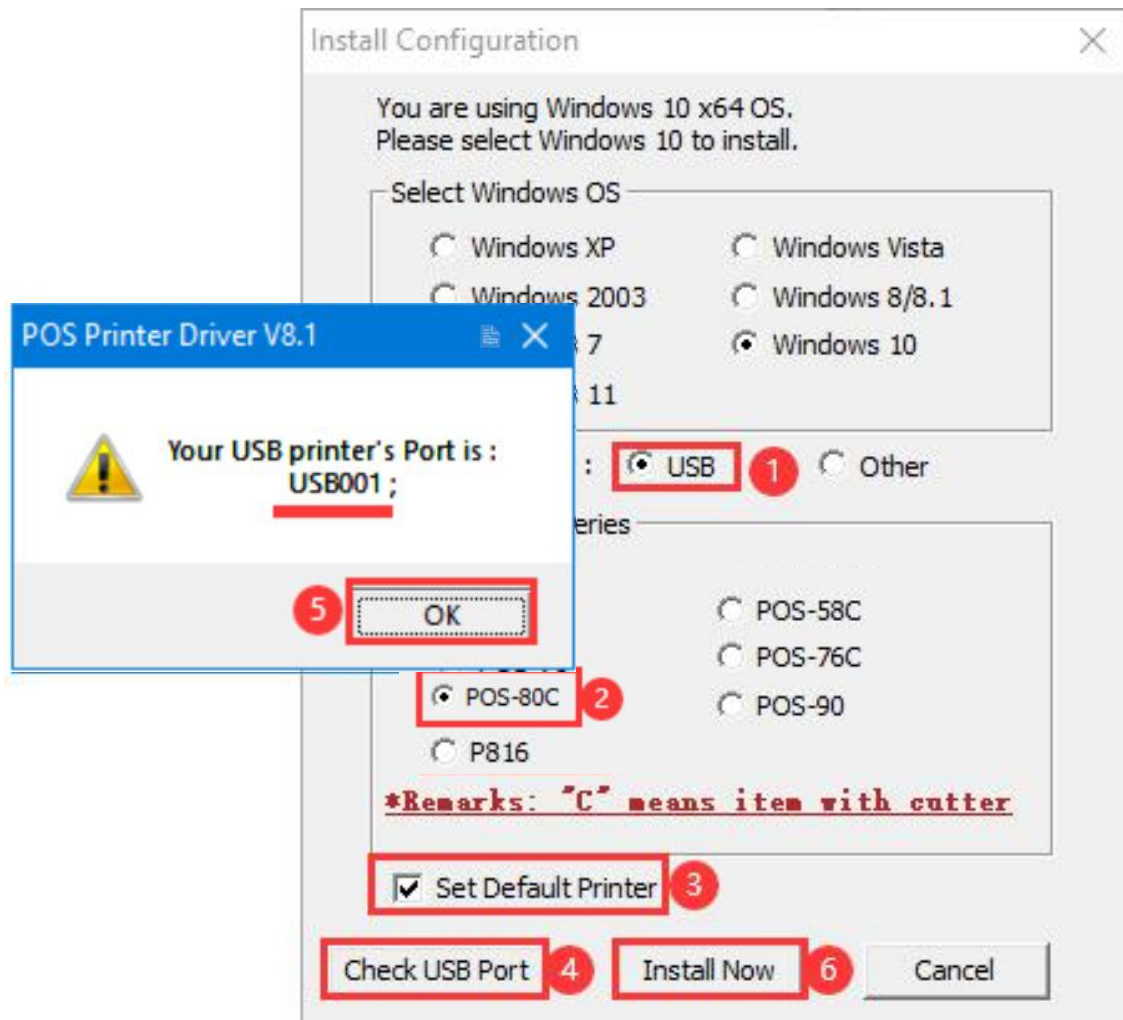
The program will automatically detect it on startup, so no selection is required

2.6.2. Select your printer type

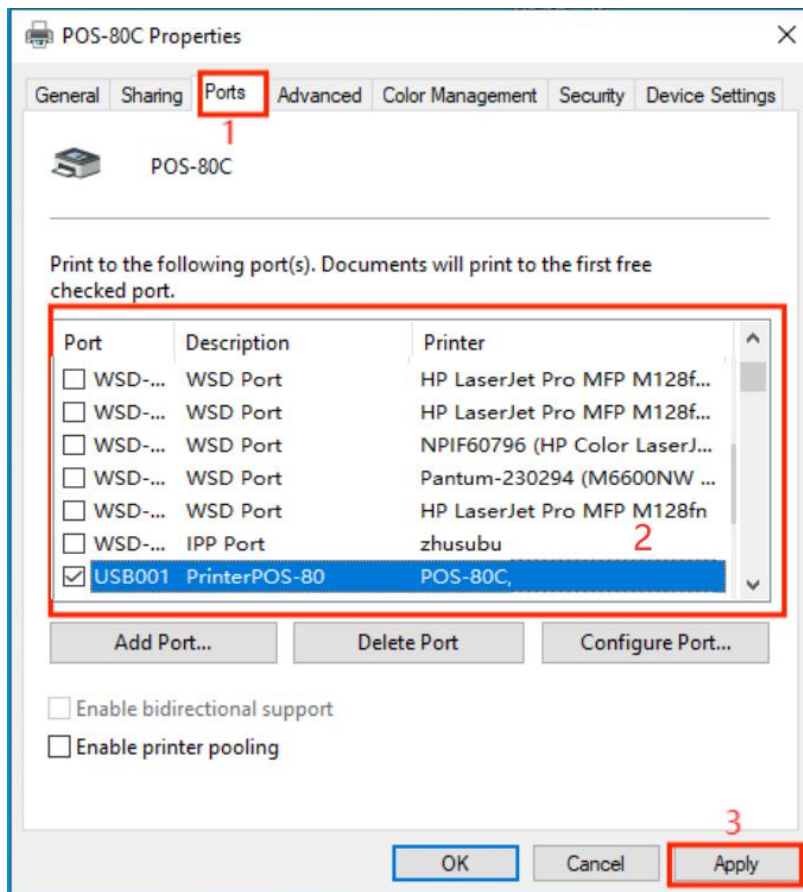
Select the printer model you need

2.6.3. Select Printer Interface

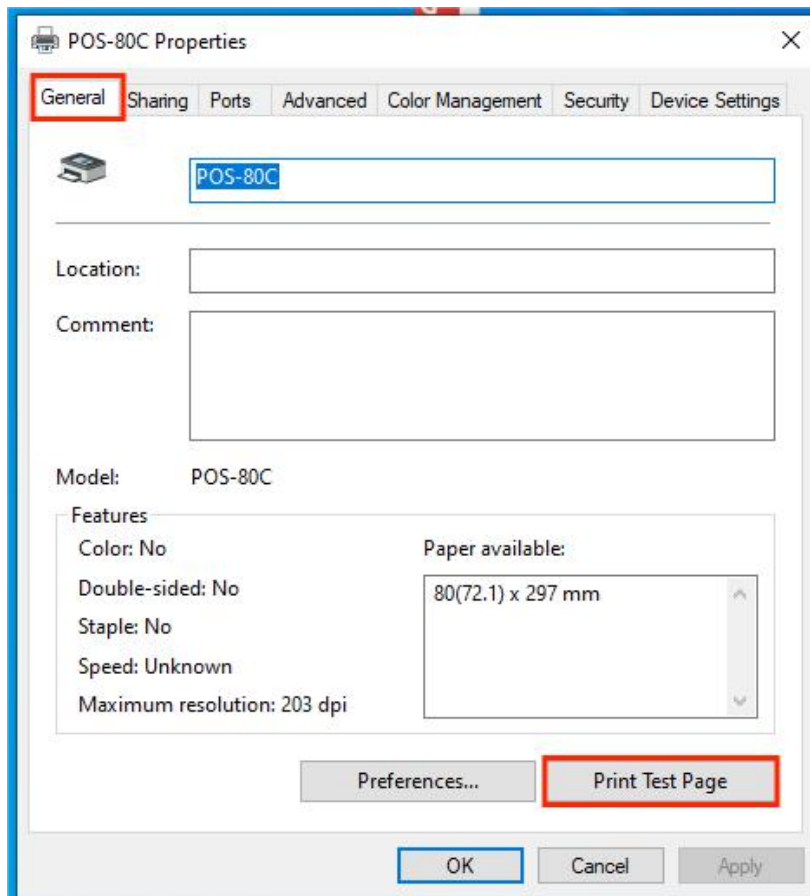
USB: Before installation, click the 'Detect USB Port' button to test the connection. If it is not connected, the installation will use the default port, which can be manually modified later



Other: After installation, you will be redirected to the port selection interface



2.6.4 Select "General" and click "Print Test Page" as shown in the figure:



3. Other instructions

3.1 Installation Failure

Please open with administrator privileges and disable antivirus software or set it as a trusted file.

3.2. Unable to Print

Please check the connection with the printer

3.3. Port Selection

Open the Control Panel, go to Devices and Printers, right-click on the printer, select 'Printer Properties', find the port selection, and click the Apply button